

DIN Rail DALI Master Controller

09.2300USB.04083

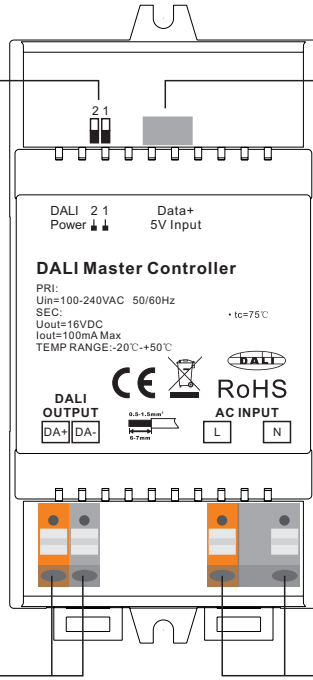


Important: Read All Instructions Prior to Installation

Function introduction

Enable or disable to use built-in DALI PS by dial switches:

2 1
 ↓ ↓ Disabled
 ↑ ↑ Enabled



USB-B female port for data communication with PC and 5V power input while using external DALI PS

1 Channel DALI output

AC100-240V Power input

Product Data

While built-in DALI PS enabled

Input Voltage	Frequency	Number of DALI Channel	Output Voltage	Output Current	Size(LxWxH)	Ambient Temperature
100-240VAC	50/60Hz	1	16VDC	100mA max	110x53x65mm	-20°C ~ +50°C

While built-in DALI PS disabled

Input Voltage	Number of DALI Channel	DALI Current Consumption	Size(LxWxH)	Ambient Temperature
5VDC	1	4mA max	110x53x65mm	-20°C ~ +50°C

Safety & Warnings

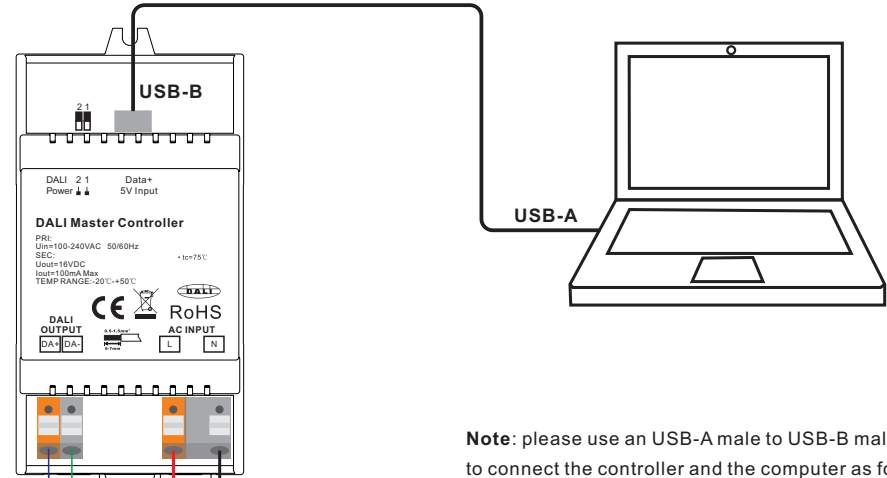
- DO NOT install with power applied to device.
- DO NOT expose the device to moisture.

- Supports DT6, DT8 Tc, DT8 XY, DT8 RGBWA device types
- Supports addressing, grouping and scene configuration for max 64 control gears
- Built-in 100mA DALI PS, no extra wiring required
- Easy connect to a Windows PC through USB port
- Easy & quick configuration through the PC configuration software

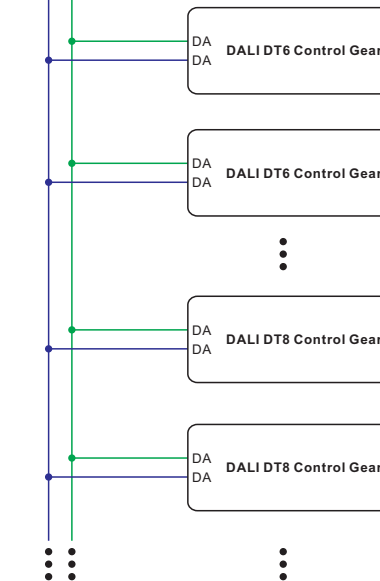
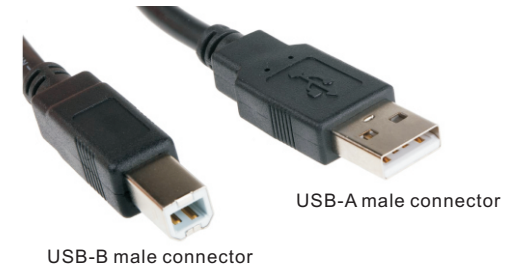
- Built-in battery, built-in RTC, supports timer task configuration
- Supports cycle schedule configuration
- Supports bionic schedule configuration (Human Centric Lighting)
- Waterproof grade: IP20

Wiring Diagram

1) While built-in DALI PS enabled

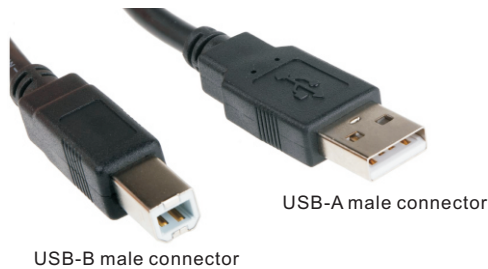
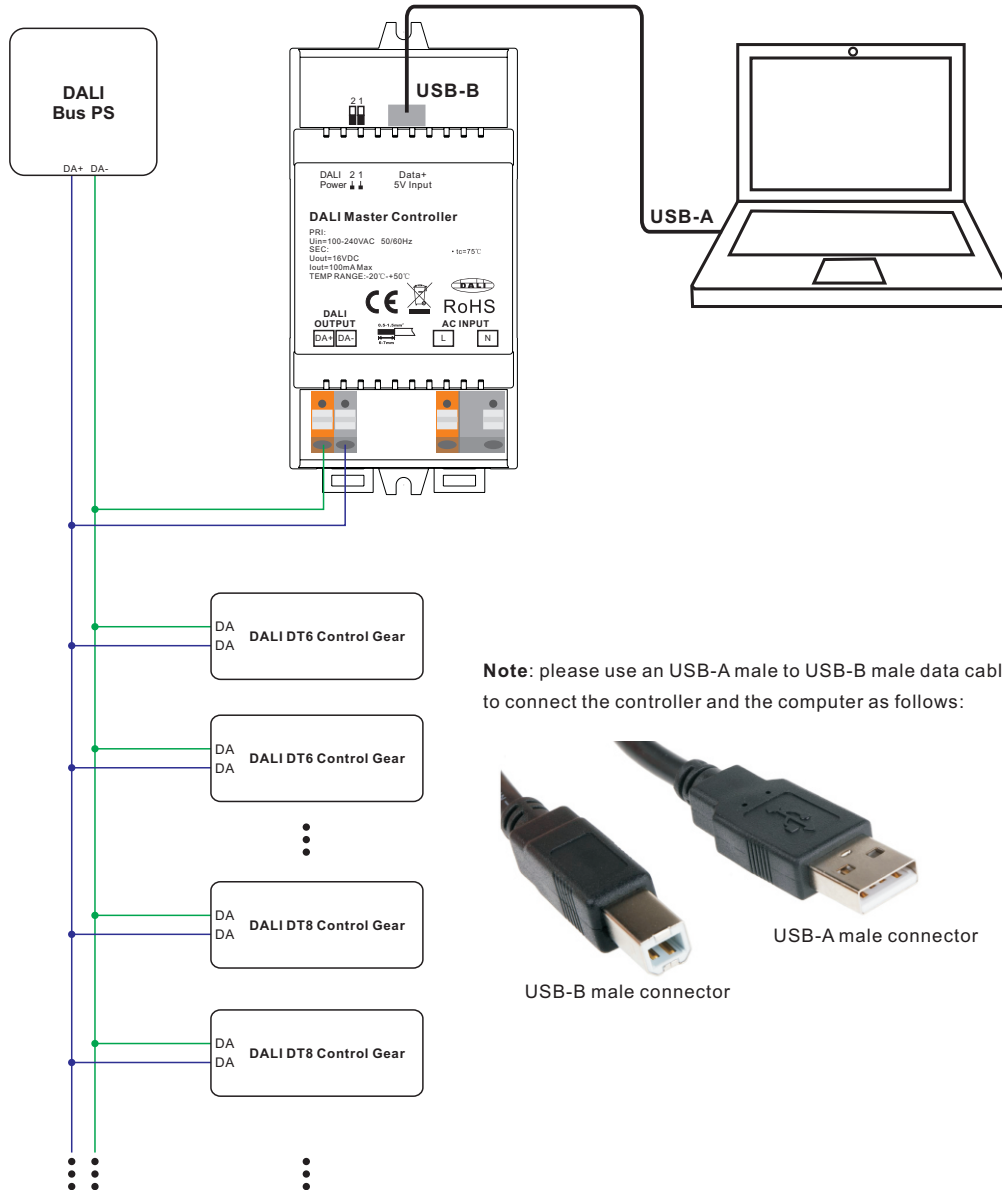


Note: please use an USB-A male to USB-B male data cable to connect the controller and the computer as follows:



Note: When built-in DALI Bus PS is enabled, the controller can supports up to 50 control gears.

2) While built-in DALI PS disabled



Note: When built-in DALI Bus PS is disabled, the controller can supports up to 64 control gears depending on external DALI PS.

Operation

1) Do wiring according to the wiring diagram and power on the DALI system.

2) Install the "DALI Master" software on the operating computer:

Step 1: Run the installation file and select installation mode as shown in **Figure 1**.

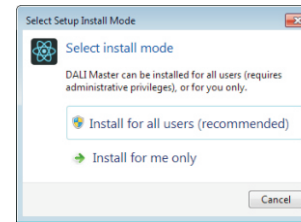


Figure 1 Select Installation Mode

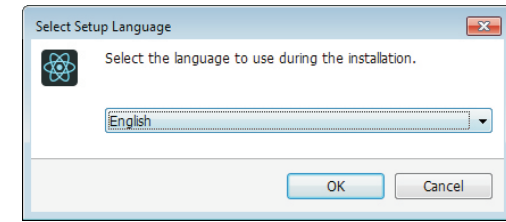


Figure 2 Select a Installation Language

Step 2: Select installation language as shown in **Figure 2**.

Step 3: Select installation path as shown in **Figure 3**.

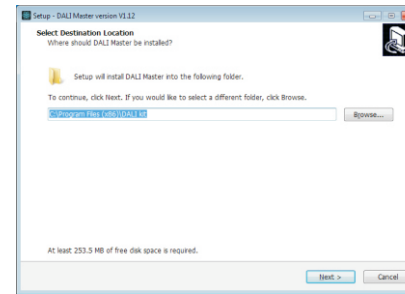


Figure 3 Installation Path

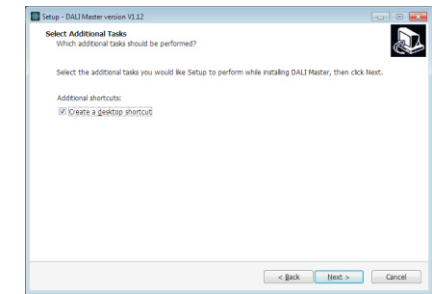


Figure 4 Create Desktop Shortcut

Step 4: Create desktop shortcut as shown in **Figure 4**.

Step 5: Starting installation as shown in **Figure 5**.

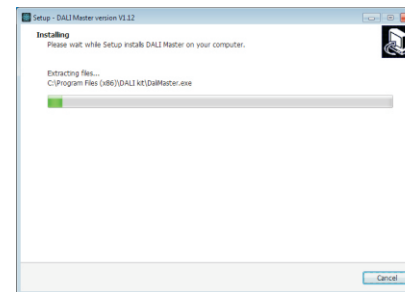


Figure 5 Starting Installation

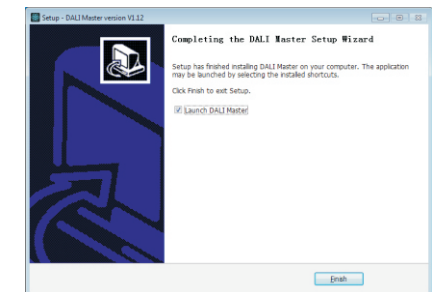
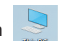


Figure 6 Complete Installation

Step 6: Complete installation as shown in **Figure 6**.

3) JRE Environment Variables Configuration

Step 1: right click the computer icon  on the desktop, select "Properties", then "Advanced system settings" to open the system properties setting window as shown in **Figure 7**:

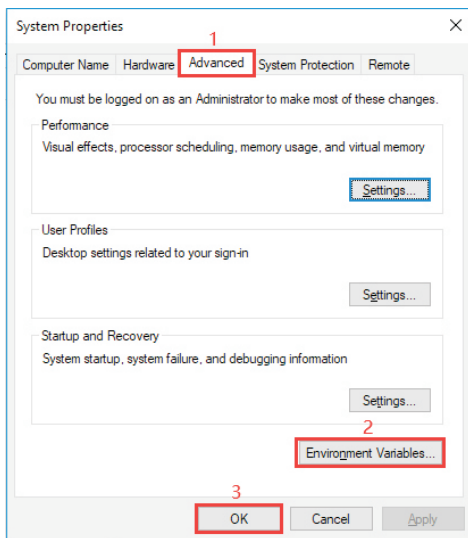


Figure 7 System Properties Window

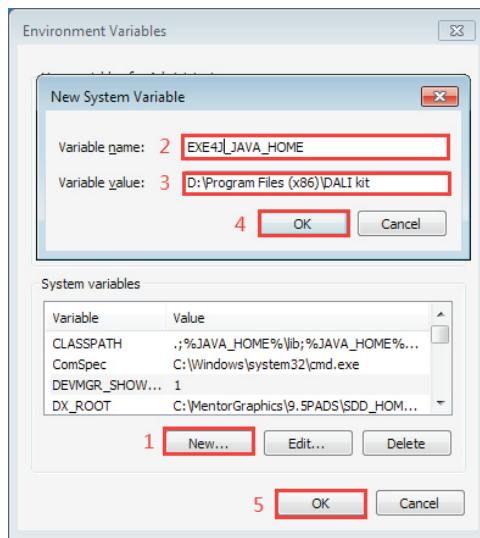


Figure 8 Environment Variables Setting Window

Step 2: switch to “Advanced” tab, then click button “Environment Variables” to open the environment variables setting window as shown in **Figure 8**:

Step 3: Click “New” button, the parameter setting window will pop-up, Variable name must be set as “EXE4J_JAVA_HOME”, Variable value should be set as the installation path of the software (the parameter in **Figure 8** is just for your reference), then click “OK” one by one to go back to the window in **Figure 7**, then click “OK” to save the environment variables setting.

Step 4: Re-start the computer to apply the environment variables configuration.

Notes:

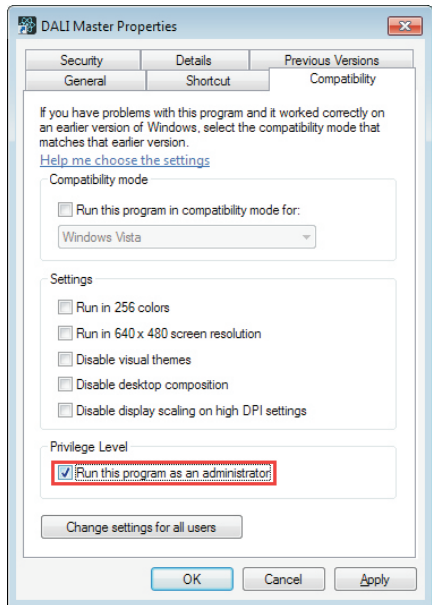


Figure 9 Run this program as an administrator

1) Please install the software according the installation steps, otherwise it can not be started correctly.

2) This software is installed to disk C by default, if the installation path is not modified, please run the software as administrator, detailed method is as follows:

Step 1: Right click the desktop icon  to check the properties, switch to “Compatibility” tab, and check item “Run this program as an administrator” as shown in **Figure 9**.

Step 2: Click “OK” to complete the setting as shown in **Figure 9**.

3) If you need to re-install the software, if you need to change the installation path please first uninstall previous installation, otherwise just install to cover the previous installation.

4) INSTALL CH340 DRIVER

Step 1: Connect the USB communication port wire, double click the file “CH341SER.EXE” to install, as shown in **Figure 10**.

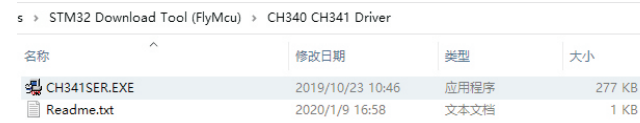


Figure 10 Double Click “CH341SER.EXE”

Step 2: If there is an indication that installation failed, please first uninstall the installation, then install again.

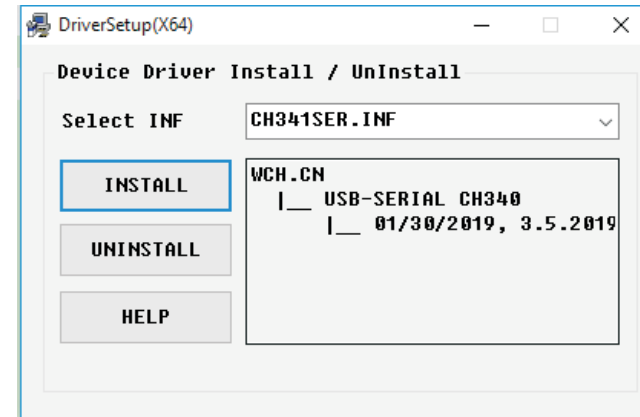


Figure 11 Driver Installation

Step 3: Right click “This PC”, then click “Management”, then click “Device Manager”, then you can check whether the installation is successful or not as shown in **Figure 12**.

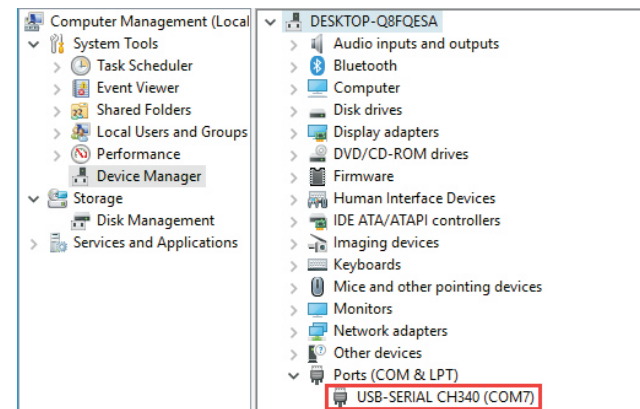


Figure 12 Driver Installation Successful

5) Follow the instruction of the PC configuration software to configure the master controller and control gears, for detailed operation please refer to the user manual of the PC software.

Product Dimension

